

## MAIN OFFICE

Jl. Matraman Raya No.  
169 JAKARTA13140  
Phone : 021-8580838  
Whatsapp : 0811-1450838  
E-mail : sales@beta.co.id

## JAMBI

Jl. Kopral Udara Sarkawi No. 07 RT. 04  
(Ki Bajuri) Kel. Talang Bakung  
Kec. Paal Merah 36139  
Whatsapp : 0811792639  
E-mail : sales@beta.co.id

## MANUFACTURE, WORKSHOP & WAREHOUSE

Jl. Raya Serang No.Km 14.4, Dukuh,  
Cikupa, Tangerang Regency, Banten  
15710  
Whatsapp :0811-1450838  
E-mail :sales@beta.co.id

## BANJARMASIN

Jl. Kacapiring I No. 8 Kertak Baru Ilir,  
Kec. Banjarmasin Tengah, Kota  
Banjarmasin Kalsel 70231  
Whatsapp :0811-1450838  
E-mail : sales@beta.co.id



## COMPANY PROFILE



## About Us

PT Beta Pramesti has been providing industries in Indonesia with water and wastewater treatment solutions since 1985. The company started as the exclusive distributor of Hydro-Chem boiler and cooling tower chemicals from Australia in 1985.

Specializing in water and wastewater solutions, the company has three divisions: Engineering, Procurement and Construction (EPC) Division, Chemical Division and Operation and Maintenance Division.

In 1990, we launched BETAQUA for water and wastewater in diverse applications from desalinating water for power plants to airports and special applications such as decolorizing sugar, condensate polishing and recycling industrial.

We started our Reverse Osmosis in 1998, with the backup of another US-based consultancy firm. From then, our membrane systems are used in international airports and high rise buildings, as well as pharmaceutical and power plants throughout Indonesia.

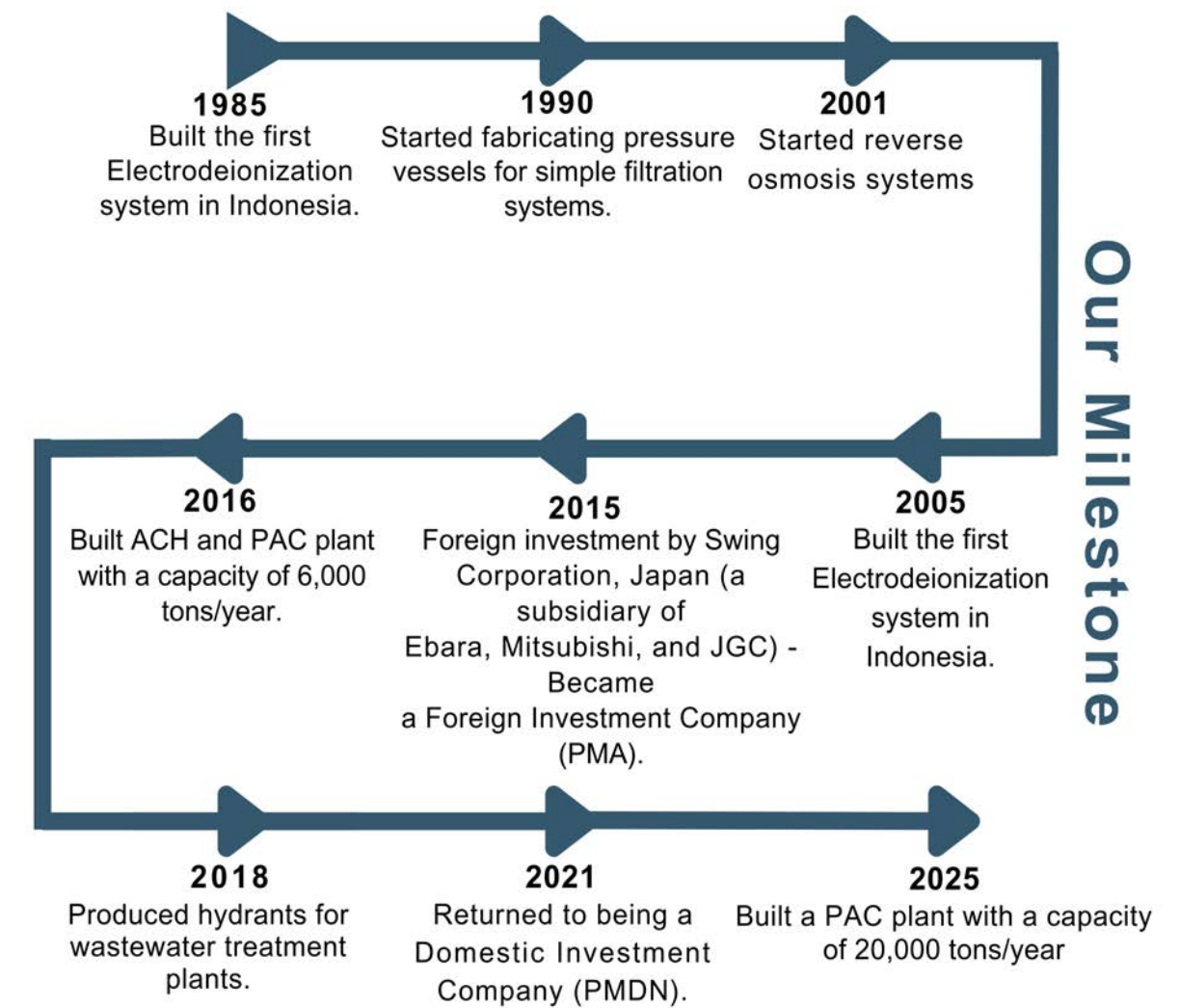
Was a part of Swing Corporation of Japan (daughter company of Ebara, Mitsubishi and JGC in 2015 and become PMA until become PMDN again in 2021, Beta Pramesti comprising of more than 150 full time employees, our services its customers through its network in Indonesia: Jakarta, Banjarmasin, Jambi and Surabaya. The company is certified to NSF, ISO 9001:2008, Halal and runs SAP for project costing and resource planning.

## Vision

Becoming the number 1 best local company in the Water and Wastewater Treatment industry in Indonesia

## Mission

Providing the best Water and Wastewater Treatment solution, satisfying customers, high quality and on time as well as contributing positively to the environment and prioritizing Occupational Health & Safety



**WE** Engineer  
Build  
Operate





# COMPLETE WORKSHOP FACILITIES

All of our BETAQUA equipment are fabricated in our workshop in Cikupa, Tangerang. The facility consists of three fabrication workshops and two finishing sheds for rubber and fiber lining work.

Workshop 1 fabricates skidded systems such as Reverse Osmosis and Ultrafiltration. Workshop 2 fabricates both skidded systems and pressure vessels for filtration and atmospheric storage vessels. Workshop 3 prepares the metal sheets for fabrication. Shed 1 is where rubber lining is performed with steam facilities, and Shed 2 fabricates fiber tanks as well as provides space for fiber lining finishing







## Research & Development

Some customer require tailor-made solutions and we are ready and able to help in this project. Our R & D laboratory can develop new products and test them throughly in the field before releasing them for customers. Our R & D laboratory continuously keeps abreast of the latest technology advances.

## Manufacturing

Our products are manufactured at our manufacturing plant in Cikupa, Tangerang. Strict quality control prosedures ensure that every vatch of chemical shipped to our customer meets product spesifications and is of the highest quality. We also adhere to strict waste disposal methods to prevent enviromental pollutions.

## Quality

The process of striving to continuously produce quality products has always been an important part of Betaflow. Raw materials and finished products undergo strict and stringent quality control before they are released. Samples of raw materials and finished products are retained for future references.

## Environment

Protecting the environment for future generations is of utmost importance to Us. Working to customers, we monitor, analyze, and treat waste streams to remove contaminants. Our waste treatment program, not only benefits the environment but also helps our customers recover and recycle valuable resources and water. In our laboratory, we routinely conduct regular reviews of the raw materials that are used, and replace them with more environment friendly ones as they are made available.

## Health & Safety

As a company that puts the emphasis on its people, we takes health and safety issues seriously. A safe working condition ensures that everyone can do his function without fears of impending work accidents. Futhermore, safe working conditions can minimize work stoppage caused by injured personnel or damaged facilities.





## Chemicals

We have served and supported various heavy industries in Indonesia. Some of them are the oil & gas industry, steel plants, pipe manufacturers, petro-chemical plant, power generation plants, pulp and paper industry, wood industry, metal working industry and mining industry. We believe that excellent technical service can only be given by being situated close to the customer. That is why we continue to expand our network of representative offices and distributors all over Indonesia.



Our engineers are consultants to our customers, working together to solve problems and to prevent new problems from occurring. Our engineers are connected to each other via our intranet computer network. Apart from trouble shooting and recommending solutions, our engineers seek to help in the implementation of the chemical treatment program.

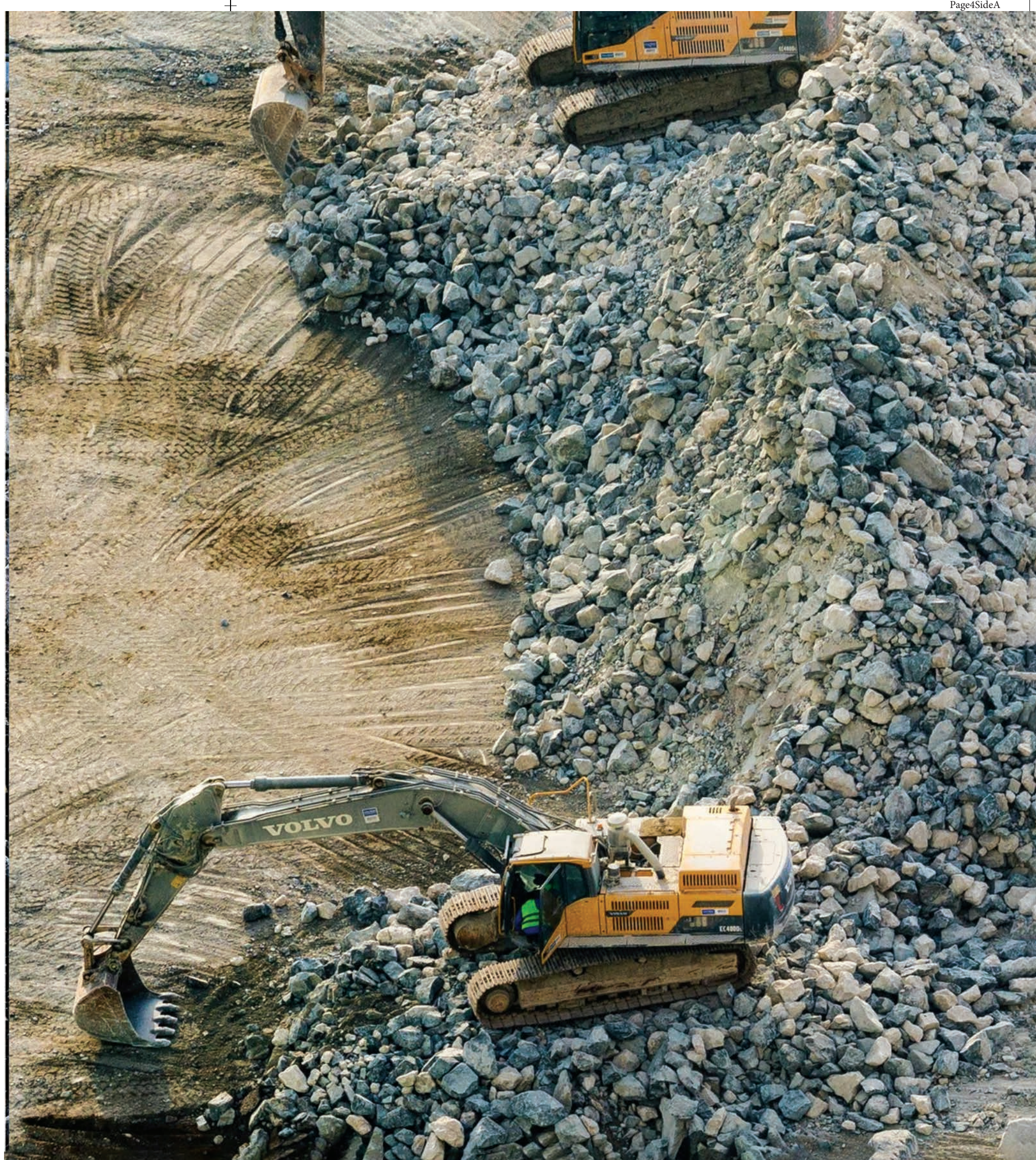
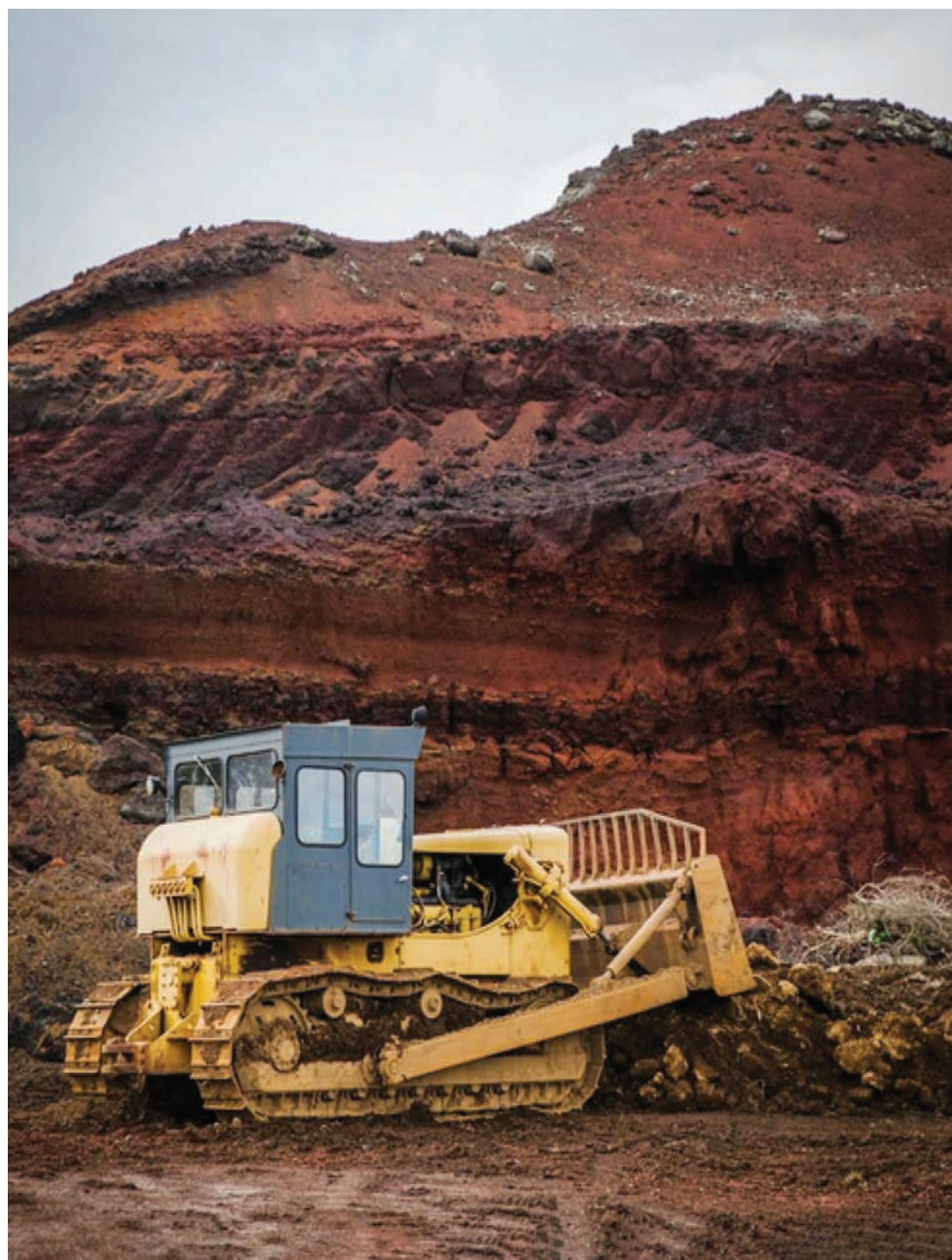
After implementation, our engineers are able to conduct continuous monitoring of the results. The collected data are then analyzed and summarized to provide further recommendations. In this manner, we can provide continuous improvement. At the same time, we free the customer to concentrate on the main operation of their business.



## Mining

The Mining Division at PT Beta Pramesti Asia focuses on providing water and wastewater solutions specifically for the mining industry. Our approach combines practical innovation and expertise with a commitment to environmental sustainability. We aim to meet the unique water management needs of mining operations efficiently and responsibly.

Our mission is to lead in effective and sustainable water and wastewater management practices within the mining sector. Through the use of advanced technology and industry knowledge, we strive to optimize resource use, minimize environmental impact, and support the sustainable growth of the mining industry.





## Wastewater And Sewage Treatment

The Wastewater And Sewage Treatment division of Beta Pramesti treats industrial and commercial waste (such as domestic sewage waste to the current regulation or better). These wastewater are usually treated for solids removal using conventional clarification and further treatment may involve biological oxygen demand (BOD) removal using biological methods or other hazardous contaminants by settling/absorption. More efficient systems using BETAQUA Membrane Bio Reactors are becoming more and more commonly used because of the low sludge production and higher quality effluent. It is now possible to recycle some of the water for reuse. Similar to the water treatment systems, Beta Pramesti also manufactures and assembles all these systems under the BETAQUA brand



## System Maintenance

The Profesional service division of Beta Pramesti handles servicing of our systems as well as systems built by other. Initially a cooling tower and boiler chemical maintenance division, it expended off to handle complete maintenance of our Reverse Osmosis, Ultrafiltration, Biological Treatment and other systems. Covering all the maintenance aspects including media replacement, chemical consumables and crucial parameter monitoring, the customer is presented with a cost efficient system with fixed and predictable operating cost.

## Electrical & Control Systems

Our ECS division assembles our own panels and do our own PLC Programming. This ensures any changes or customization required by our customers can be performed quickly by our own in house PLC programmers and electrical engineers. Troubleshooting time is also cut down drastically as all of our control sytems are designed by our process engineers working with our in house programmers.





## Oil & Gas

The Oil & Gas Division of PT Beta Pramesti Asia offers practical and efficient water and wastewater management solutions for the oil and gas industry. Focused on robust and realistic technology, we provide water and wastewater treatment chemicals specifically designed to meet the unique needs of this sector. Our products combine reliability and effectiveness, making them an appropriate choice for companies in the oil and gas sector.

The strength of our products lies in their ability to provide solutions that have an immediate positive impact on operational efficiency and resource management. Our commitment to quality and dependability is reflected in every product we offer, establishing us as a reliable choice for water and wastewater treatment needs in the oil and gas industry.



PAC & ACH

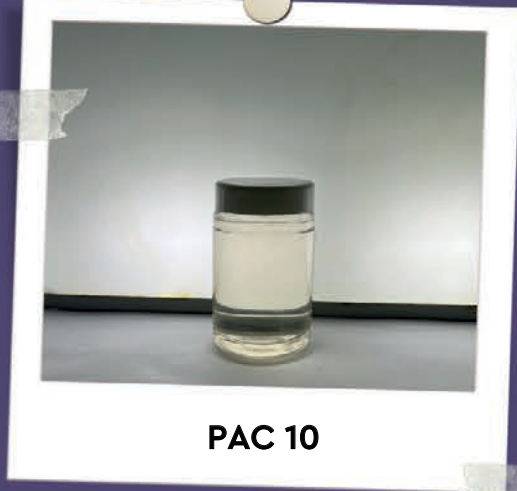
PT Beta Pramesti Asia is dedicated to high-quality production of coagulants. The company sets strict quality standards, ensuring their Poly Aluminium Chloride (PAC) and Aluminum Chlorohydrate (ACH) products meet top industry norms. Beyond manufacturing, they also provide strong technical support to customers using PAC and ACH for water coagulation processes.

With the company's expert guidance, clients can achieve optimal outcomes, supporting efficient and effective water purification processes. PT Beta Pramesti Asia is also committed to environmental responsibility. In producing PAC and ACH chemicals, the focus is on sustainability, aiming to reduce the environmental impact of water treatment processes.

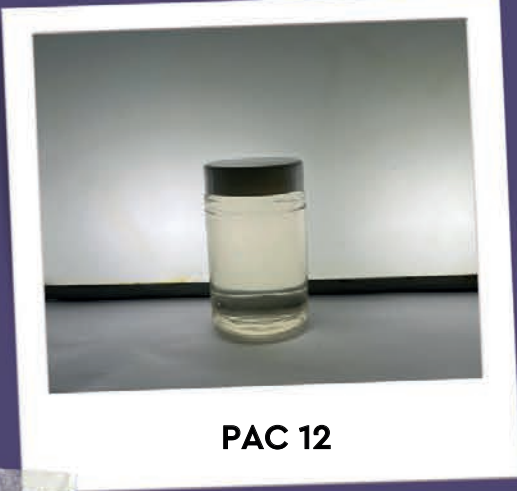
This commitment is in line with the global movement towards environmentally friendly practices. As a growth-oriented local manufacturer, PT Beta Pramesti Asia plays a vital role in the water treatment sector and supports sustainable industrial growth, contributing to a cleaner and healthier environment.



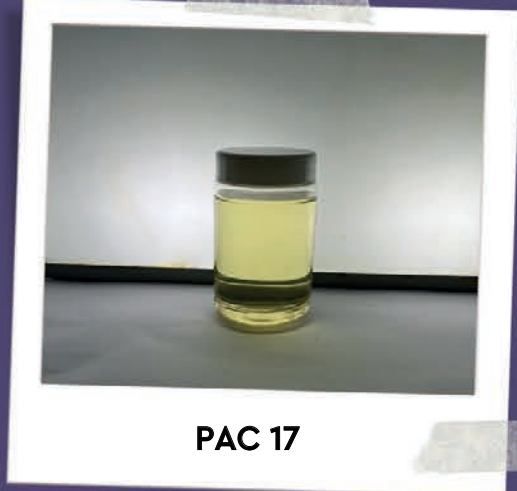
PAC 8



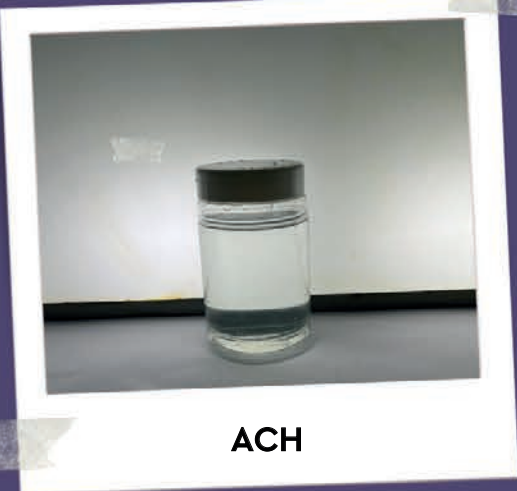
PAC 10



PAC 12



PAC 17



ACH



PAC and ACH Specifications

Product	SG	Al <sub>2</sub> O <sub>3</sub> (%)	Basicity (%)	Appearance
PAC 8	1.150 - 1.180	8.0 - 9.0	min. 35.00	Colorless to yellowish liquid
PAC 10	1.190 - 1.220	10.0 - 11.0	min. 35.00	Colorless to yellowish liquid
PAC 12	1.230 - 1.260	12.0 - 13.0	min. 35.00	Colorless to yellowish liquid
PAC 17	1.360 - 1.390	17.0 -18.0	min. 35.00	Clear yellowish to yellow liquid
ACH	1.320 - 1.390	min. 23.00	70.00 - 85.00	Clear to Slightly Hazy Liquid



# Water Treatment

The Water Treatment division of Beta Pramesti treats surface water (both river and seawater) and subsurface water (such as well water) to the customer specification. These water are usually treated for removal of suspended solids using conventional clarifiers or ultrafiltration systems. Further treatment may utilize hardness/iron/ organic removal, as well as other less common contaminants. Reverse Osmosis may be used to increase the quality of the water, and for certain customers, mixed bed systems or electrodeionization systems are used.

Beta Pramesti manufactures and assembles all these components using the highest quality components in our own manufacturing facility to ensure complete product quality and quick turn around time.



## Web Based Monitoring

BETAQUA Premium range of equipment include a web based monitoring developed internally by our engineers. This allows the customer as well as our engineering team to monitor BETAQUA equipment using web browsers from anywhere in the world. Water/wastewater system data such as flow, dissolved oxygen, conductivity, turbidity, pressures and pH are logged and stored in a server with redundant storage, protected by strong encryption. When one of the parameters is out of range, for example when conductivity is above a certain limit, or when an emergency button is pressed, an email/sms will be sent within minutes, providing around the clock management by exception.





# Our Product

## BETAGARD



### Cleaning Chemicals

- Alkalinity Control & Neutralizing Cleaning Chemicals
- Inhibited Liquid Acid for Rust & Siliceous Scale Removal

### Water & Wastewater Clarification

- Polyaluminium Chloride Liquid
- Polyaluminium Chloride Powder
- Aluminium Chlorohydrate
- Anionic Flocculant
- Cationic Flocculant
- Polydadmac

### Boiler Water Treatment

- Neutralizing amine
- Alkalinity control
- Boiler water & scale preventative
- Boiler scale control
- Boiler scale preventative
- Catalysed corrosion preventative
- Boiler water treatment
- Catalyzed oxygen scavenger

### Reverse Osmosis Treatment

- Premium antiscalant & antifoulant
- Low pH membrane cleaner
- High pH membrane cleaner
- Biomate for reverse osmosis systems
- Oxygen & chlorine scavenger

### Waste Water Bacteria

- Bacterial For seeding & Start Up WWTP/STP
- Special Bacterial for Oil and Grease (grease Trap)

### Cooling Water Treatment

- Scale inhibitor & dispersant
- Corrosion & scale inhibitor
- Corrosion inhibitor
- Non oxidizing biocide
- Biocide
- Oxidizing biocide

### Wastewater Treatment Plant

- Enzyme bacteria for wastewater treatment plant
- Bacterial cultures
- Grease trap

### FFA Enzyme Inhibitor Palm Oil

- TBS Additive
- CPO Additive

## TERRAGARD

- Heavy Duty Water Base Degreaser
- Quick Break Degreaser
- Coal Dust Suppressant
- Hauling Road Dust Suppressant
- Ready to Use Engine Radiator Coolant
- Solvent Base Degreaser
- Carbon Remover
- Desel Exhaust Fluid / AdBlue
- Coal Fire Suppression
- Redmud Flocculant
- Hydrate Flocculant
- Heavy Duty Waterless Hand Soap
- Tire & Rim Protective
- Tire Mounting Paste
- Semi Solvent Degreaser





# Our Product

## BETAQUA

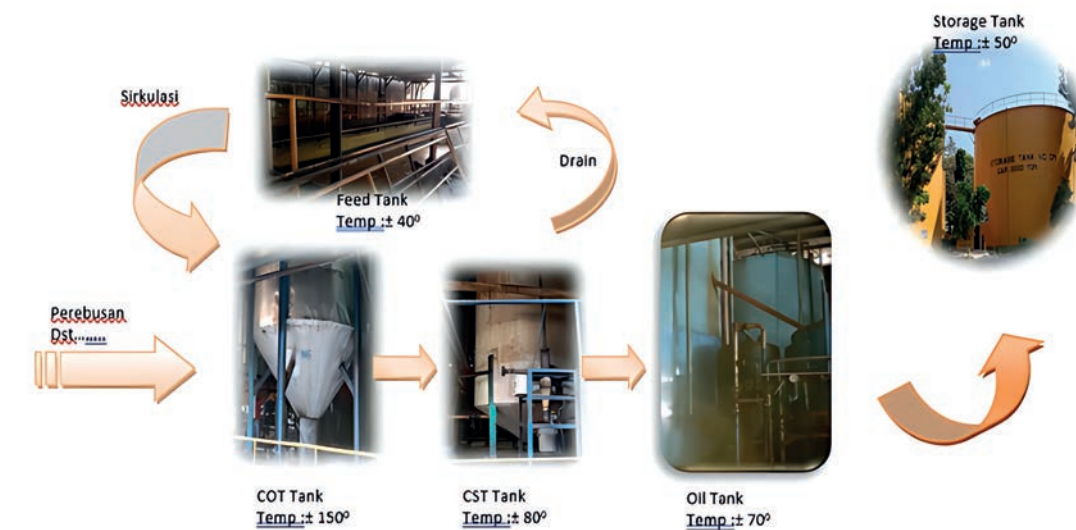
- DAF (Dissolve Air Flotation)
- Clarifier
- Fiberglass Media filter
- Steel Media filter
- Stainless steel cartridge housing
- PVC cartridge housing
- Fiberglass cartridge housing
- Polypropylene cartridge Filter
- Ultrafiltration
- Seawater reverse osmosis
- Brackish water reverse osmosis
- Standard UV & Cartridge UV
- Compact sewage treatment plant
- Plate settler
- Betaqua Compact STP
- Betaqua Fixed Media

## BETAFLW

- Demulsifier
- Deoiler / Reverse Demulsifier
- Pour Point Depressant  $\pm$  Wax Inhibitor
- Drag Reducer
- Paraffin Solvent
- Wax Dissolver
- Crude Corrosion Inhibitor
- Water Corrosion Inhibitor
- Gas Corrosion Inhibitor
- Water Clarifier
- Biocide (Oxidizing & Non Oxidizing)
- Scale Inhibitor
- Antifoam
- Scale Inhibitor Stick
- Corrosion Inhibitor Stick
- Foaming Agent Stick
- Additives Drilling Chemicals
- Stimulation Chemicals
- EOR Chemicals
- Mono Ethylene Glycol
- Tri Ethylene Glycol
- Neutralizing Amine
- CO<sub>2</sub> & H<sub>2</sub>S Removal (Amine Solvent)



## FFA Enzyme Inhibitor Palm Oil



Sampling CPO Dalam Uji Lab

We present the latest generation of Enzyme Inhibitor-based additives - an effective and process-friendly solution to reduce Free Fatty Acid (FFA) levels in oils quickly, stably and efficiently. This additive works by inhibiting the activity of the lipase enzyme, the main cause of FFA increase during storage or production. By preventing FFA formation in the first place, oil quality is maintained and shelf life is extended.



# Our Projects

## DAF

No.	Customer Name	Memo
1	Jaya Ancol	2x350 m3/hour Sea Water Pre Treatment
2	Riau Sakti United Plantation	3 x 120 m3/hour Coconut Waste Water Treatment
3	PT Jhonlin Group (Pelabuhan Batu Putih)	5 x 250 m3/hour Sea Water Pre Treatment
4	Energi Listrik Batam	1x25 m3/hour Sea Water Pre Treatment

## Clarifier

No.	Customer Name	Memo
1	Riau Sakti United Plantation	250 m3/hour Peat Water PreTreatment
2	Pulau Sambu Guntung	250 m3/hour Peat Water Treatment
3	PLTU Paiton	80 m3/hour Cooling Water Recycle
4	Tolan Tiga Group	85 m3/hour Peat Water Treatment
5	Pertamina Lirik	2 x 10 m3/hour River Water Treatment

## Sea Water Treatment

No.	Customer Name	Memo
1	Jaya Ancol	SW Desalination 5000 m3/day for Residential And Theme Park
2	Bali Pecatu Graha	SW Desalination 3000 m3/day for Residential
3	Salim Ivomas (Bimoli)	SW Desalination 1000 m3/day for Palm Oil And Refinery
4	Sime Darby Oils	SW Desalination 2200 m3/day for Palm Oil And Refinery
5	Sungai Budi Group (PKS 11)	SW Desalination 50 m3/hour for Palm Oil and Refinery
6	Sunga Budi Group ( Biodiesel)	SW Desalination 1200 m3/day for Palm Oil and Refinery
7	Sungai Budi Group ( TBL Sidoharjo)	SW Desalination 3x30 m3/hour for Palm Oli and Refinery
8	Jhonlin Group (Pelabuhan Batu Putih)	SW Desalination 20 m3/hour for Sea Port
8	PLTU Ropa - NTT	2x7 MW, SW Desalination for Boiler Make Up Water
9	PLTU Tj. Balai Karimun - Kepri	
10	PLTU Tidore - Maluku Utara	
11	PLTU Jeranjang - Lombok	1x25 MW, SW Desalination for Boiler Make Up Water
12	PLTU Amurang - Sulut	2x25 MW, SW Desalination for Boiler Make Up Water
13	PLTU Anggrek - Gorontalo	
14	PLTU Semen Tonasa - Sulsel	2x35 MW, SW Desalination for Boiler Make Up Water
15	PLTU Indramayu - Jabar	3x330 MW, SW Desalination for Boiler Make Up Water
16	PLTU Pacitan - Jatim	2x315 MW, SW Desalination for Boiler Make Up Water
17	PLTU Barru - Sulsel	1x200 MW SW Desalination for Boiler Make Up Water

## Brackish Water Reverse Osmosis

No.	Customer Name	Memo
1	Godfrey Hirst Company, Australia	Recycling of Wastewater using UF and BWRO
2	Synchrotron Australia	Electron Research Facility
3	Pacbrands, Australia	Recycling of Wastewater using UF and BWRO
4	Pantai Mutiara Apartments	BW Desalination for three Apartment Towers
5	Indah Kiat Pulp Paper	BW Desalination for Process Water
6	Tanjung Unggul Mandiri	BW Desalination for Potable Water
7	Sungai Bahar Pasifik Utama	BW Desalination for Boiler Feed Water
8	Indofood (Tanjung Isuy)	BW Desalination for Boiler Feed Water
9	Juanda Airport	BW Desalination for Potable Water

## Ultrafiltration

No.	Customer Name	Memo
1	Pertamina Tambun	Recycling of Produced Water
2	Grand City Mall Surabaya	Reverse Osmosis pretreatment from River water
3	Sime Darby Oil	Reverse Osmosis Pretreatment from Sea water
4	PLTU Indramayu	Reverse Osmosis pretreatment from Sea water
5	PLTU Pacitan	Reverse Osmosis pretreatment from Sea water
6	Energi Listrik Batam	Reverse Osmosis pretreatment from Sea water

## Electrodeionization(EDI)

### First locally build EDI skids in Indonesia

No.	Customer Name	Memo
1	BMS / Taisho Pharma	Purified Water to USP standards
2	Dankos Laboratories	Purified Water to USP standards
3	Ikapharmindo	Purified Water to USP standards
4	Mega Esa farma	Purified Water to USP standards
5	Immortal Cosmedica	Purified Water to USP standards
6	Global Multi Pharmalab	Purified Water to USP standards
7	Mahakam Beta Farma	Purified Water to USP standards
8	Dion Farma	Purified Water to USP standards

## Chemical

No.	Customer Name	Memo
1	BUT Sarulla Operation, Ltd	Chemical General
2	PT. PALLYJA JAKARTA	ACH
3	Pembangkit Jawa - Bali	Chemical Boiler Proses & Chemical General
4	Pulau Sambu	Chemical Boiler & Chemical Cooling Process
5	Riau Sakti	Chemical Boiler & Chemical Cooling Process
6	Tunas Baru Lampung	Chemical Boiler & Chemical Cooling Process
7	Budi Makmur Perkasa	Chemical Boiler & Chemical Cooling Process
8	PDAM Tirtanadi Medan 2 site	Chemical for WTP
9	Pertamina EP	Supply Demulsifier
10	Pertamina EP	Supply Chemical Scale Inhibitor dan H2S Scavenger
11	Pertamina EP	Supply Chemical PPD, Demulsifier dan Deoiler
12	Pertamina EP	Pengadaan Chemical PPD

## Demineralizer

No.	Customer Name	Memo
1	Petronas Chemical	3 x 330 m3/h Boiler Make Up and Condensate Polishing
2	Petrokimia Gresik	180 m3/hour Boiler Make Up Water
3	Indah Kiat Pulp and Paper	3 x 250 m3/hour Boiler Make Up Water
4	LPPPI Jambi	1x250 m3/hour Boiler Condensate Polishing
5	Sulfindo Adi Usaha	2x55 m3/hour Boiler Make Up Water
6	Kutai Refinery Nusantara	1x200 m3/hour Boiler Make Up Water
7	Socimas	2 x 165 m3/hour Boiler Make Up Water
8	Tolan Tiga Group	1x45 m3/hour Boiler Make Up Water
9	Johnlin Group	1x22 m3/hour and 27 m3/hour Boiler Make Up Water





# Our Projects

## Sewage Treatment Plant

No.	Customer Name	Capacity
1	STP Latumenten	450 m3/day
2	STP Mall Kelapa Gading 3	1800m3/day
3	STP Project Apartment Grand Center Point	432 m3/day
4	STP & Recycle System Apartment The Suite	400 m3/day
5	STP System Cluster Palm & Maple Summarecon Bekasi	1100 m3/day
6	STP Summarecon Mal Bekasi 1	700 m3/day

## Storage Tank

No.	Customer Name	Capacity
1	Hyundai Engineering Co. Ltd (HEC)	Cap 320
2	PT PP	Storage Tank Proyek PLTG 500MV (1 x25 M)
3	PT Andalan Furnindo	39 Unit Storage Tanks

## WWTP & Sludge Dewatering System from CPO Process

No.	Customer Name	Capacity
1	WWTP Socimas	1080 m3/day

## BOO / BOT Project

No.	Customer Name	Contract Detail (Years)
1	Jaya Ancol	Desalination Water (2010 - 2020)
2	Mediterrania Garden Residence	Recycle Water (2011 - Now)
3	Bali Pecatu Graha	Desalination Water (2016 - Now)
4	Garuda Food Putra Putri Jaya	Process Water (2017 - Now)

## Wastewater Treatment Plant

No.	Customer Name	Capacity
1	PLTU Sul-Sel Bar-2	15 m3/hour
2	PT Rekadaya ElektriKa	1 x 1200 m3/day
3	Green Bay Pluit	1 x 750 m3/day
4	PT Andalan Furnindo	Various
5	PT Kutai Refineri Nusantara	1 x 60 m3/day
6	PT Perindustrian Sawit Synergy (KLK)	62 m3/day
7	PT Perindustrian Sawit Synergy (KLK)	350 m3/day
8	PT PP Persero (Tbk)	300 m3/day
9	PT PP Persero (Tbk)	375 m3/day
10	PT Kutai Refinery Nusantara (APICAL)	840 m3/day
11	PT Kirin Miwon Foods	3600 m3/day

